

بِسْمِ اللَّهِ الرَّحْمَنِ الرَّحِيمِ

Capillaroscopy
Practical guide and Case presentations

Prof. Aly El Ashmaui

Scientific group of Vascular Medicine
Department of Medicine Cairo University



Objective

Trying to simplify the interpretation of nail fold capillaroscopy



Source of cases

Cases recorded from my own clinic

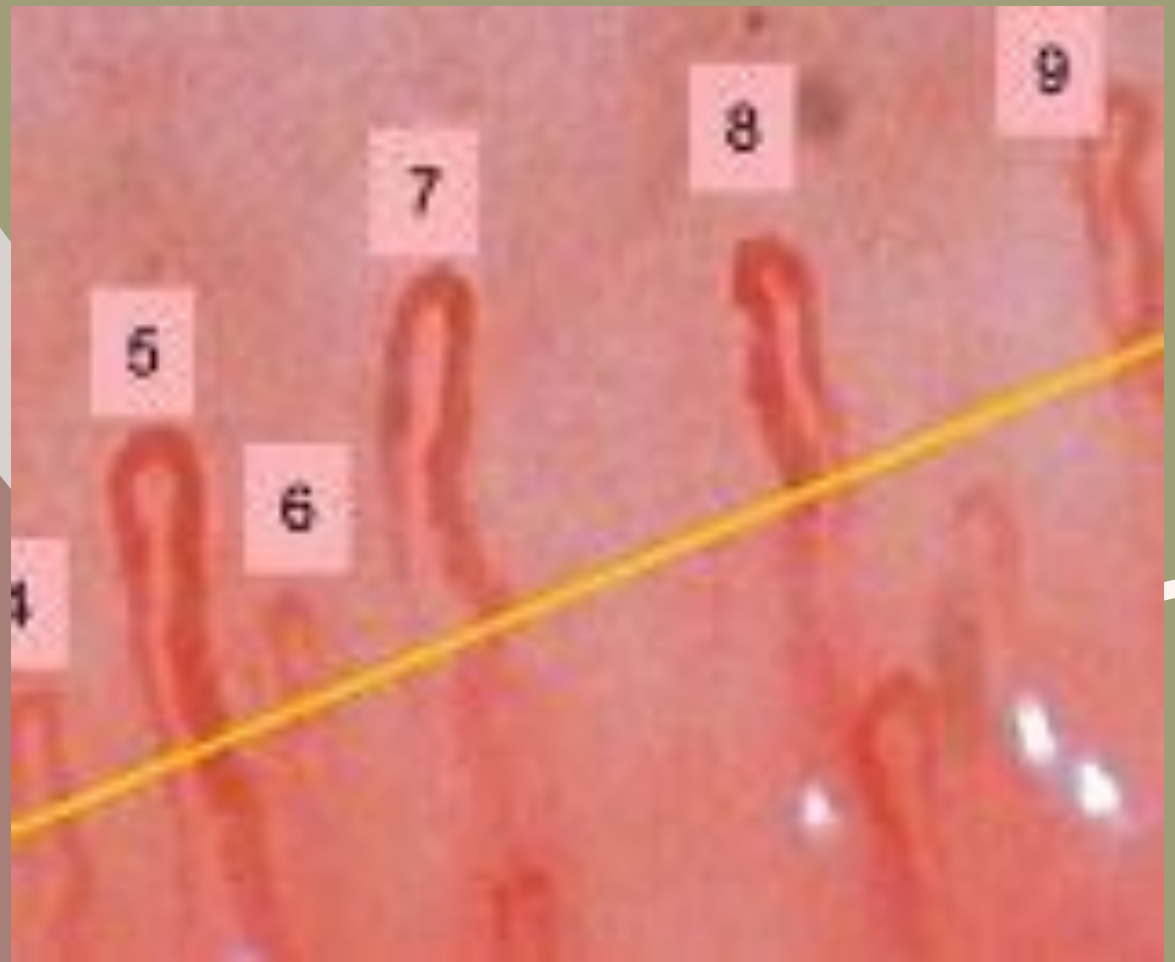
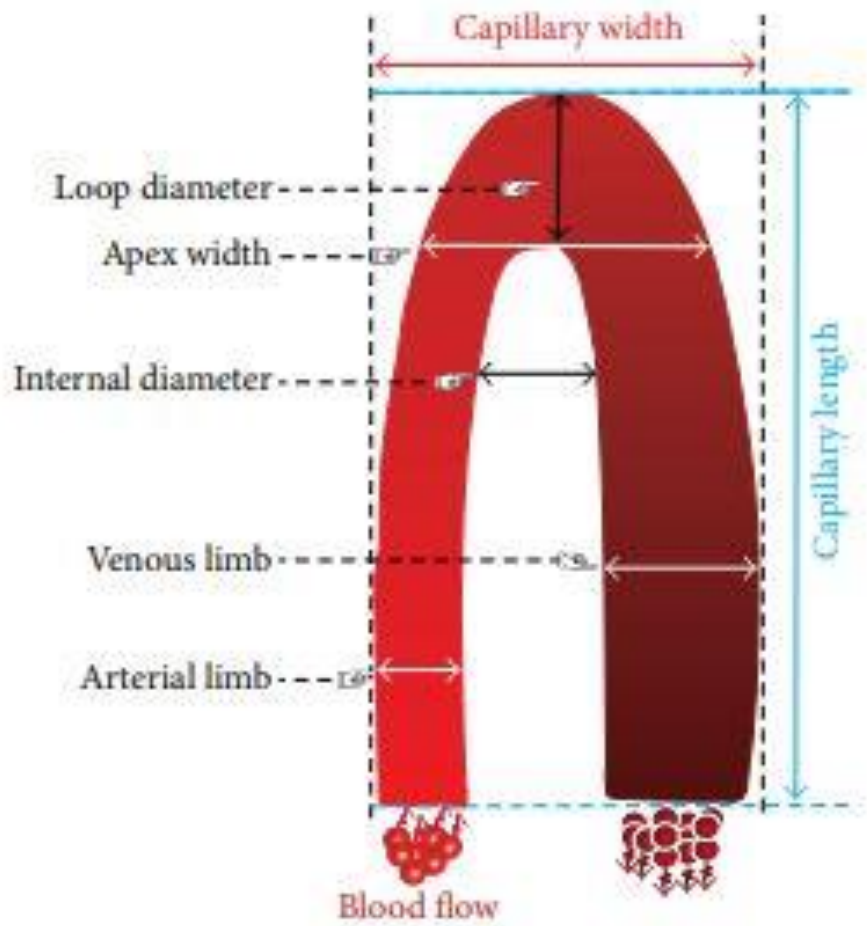
Cases recorded from vascular medicine section
Cairo university

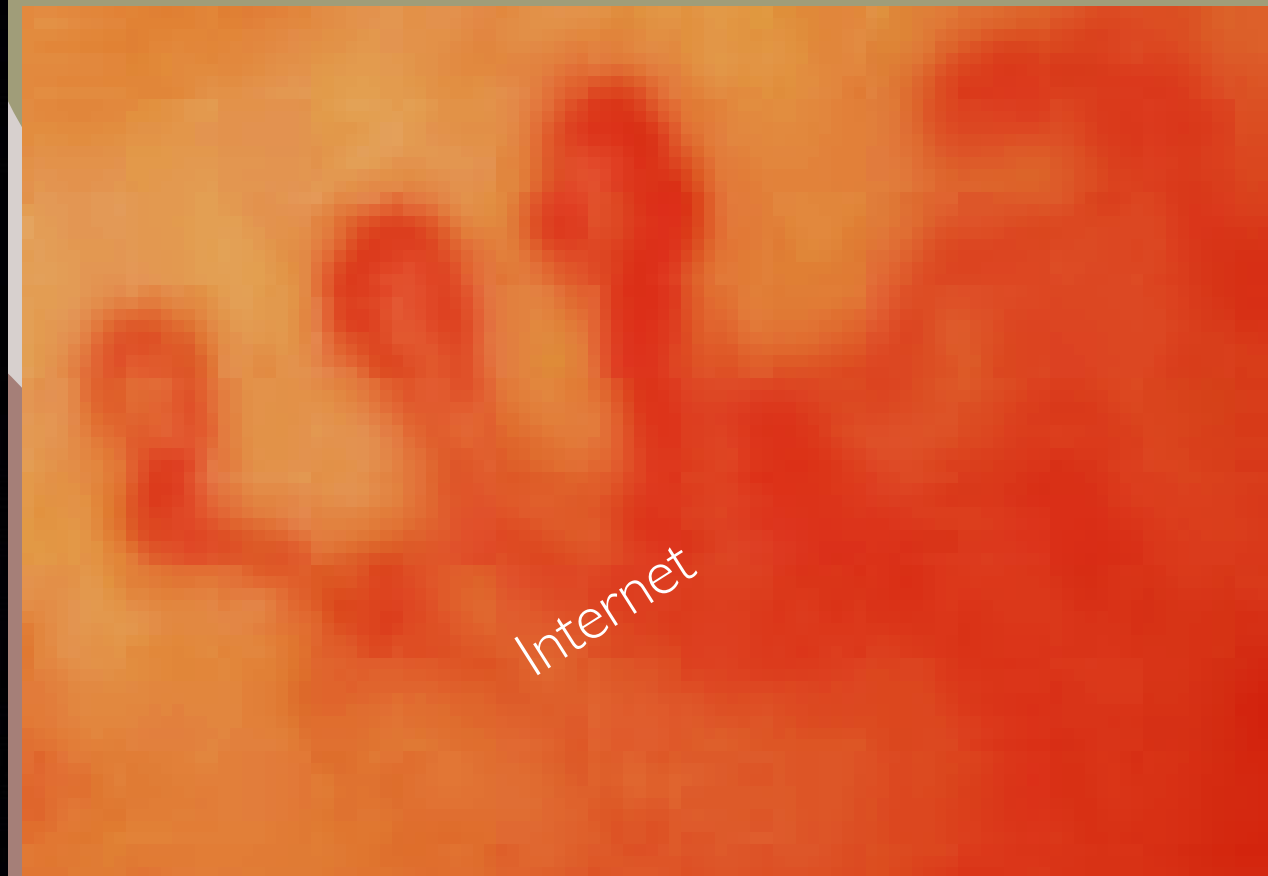
Few cases from the internet search
for explanation and comparison

Normal nail fold capillaroscopy

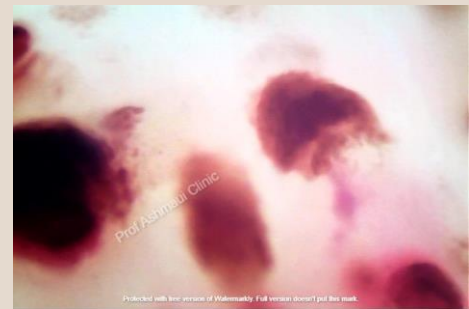












Case diagnosed clinically as scleroderma

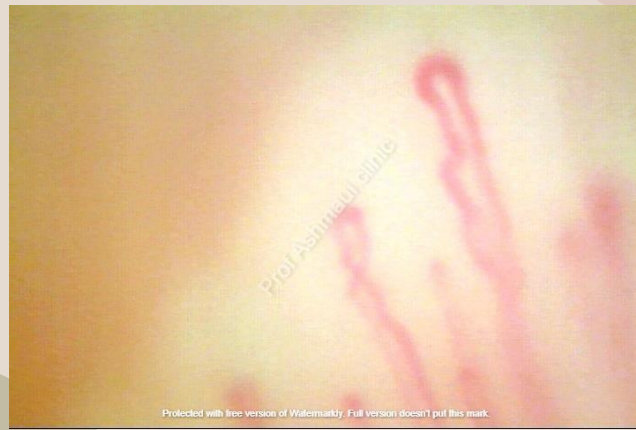












SLE

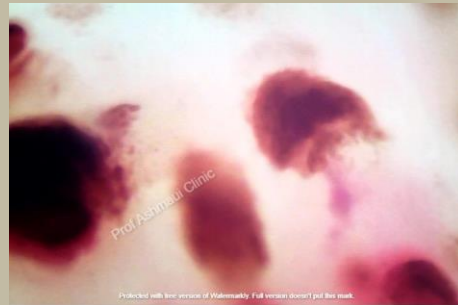
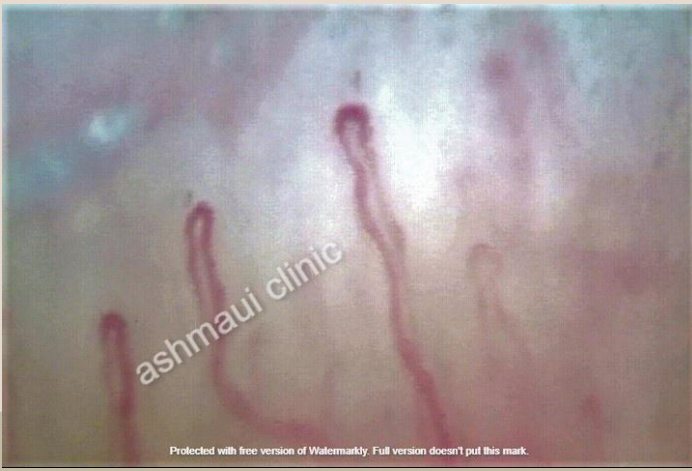


SLE



SLE





Clinical case



A female patient aged 28 years
Slightly overweight
Presenting with recurrent chest pains
In the right lower ribs, left shoulder
Of 2 weeks duration
And severe dyspnea and cough
No fever

CT chest revealed a homogenous patch at the right
Lung base

Lower limb examination was free

Duplex examination revealed left subacute thrombus
Of the right lower limb



Telangiactasia of the face

Dermatomyositis

Scleroderma

Lupus



Future Presentations
by the Scientific group of Vascular Medicine

Correlation between capillary morphology and Immune profile

Correlation between capillary morphology and Vascular endothelial factors



Thank You

Kindly Keep in contact for more experience